

METADOR



Defender ModuleX

Steel doorsets for Modular buildings

Defender ModuleX is designed to facilitate fitting flush into thin wall panels as used in the modular building industry.



E sales@metador.com

W metador.com

T 01642 337119

METADOR



Thermally-Rated



Fire-Rated



Acoustic



DDA Compliant

The Defender ModuleX doorset has been designed for the modular building industry to provide an ultimate fast-fitting and cost-effective solution complete with a four-sided cloaking frame to conceal panel cut outs.

Door Leaf

- 1.5mm galvanised steel skins
- Internal steel strengtheners
- Mineral wool for superior insulation
- Anti-jemmy flanges to the leading edge of the leaf for excellent jemmy resistance
- Large number of glazing options available to be incorporated
- Louvred grilles of various sizes can be incorporated

Mechanically fixed ensuring strength and rigidity.

Frame

- 1.5mm galvanised steel with built in cloaking profile
- Profiled headers and vertical posts fixed with strong M8 bolts ensuring rigidity, superior to welded or riveted frames
- 16no threaded adjusters, compensating for most structural opening irregularities
- Multiple frame depths are available on request to suit your specific wall panel construction.

No need for shims or packers, providing an extremely secure fit.

Thresholds

- 1.5mm stainless steel profile
- DDA compliant
- Available as outward, inward opening with full in-built cloaking to prevent water ingress.



Seal

For optimum weather, thermal and acoustic performance, a tubular silicone/ rubber seal is bonded into the frame rebate to ensure effective sealing of the door/frame gap.

Hardware

- 4no stainless steel hinges for smooth operation
- A huge range of locks, latches, lever handles, panic hardware, closers and stays available
- Various integrated electronic options available
- Lever action flushbolts in leading edge of the inactive door leaf available with double doors.

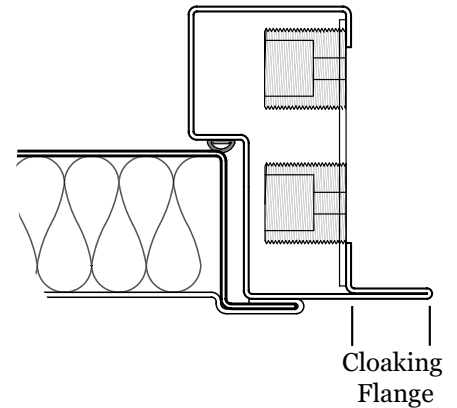
Thermal performance

Tested and achieving an excellent rating of 2.2W/m²K.

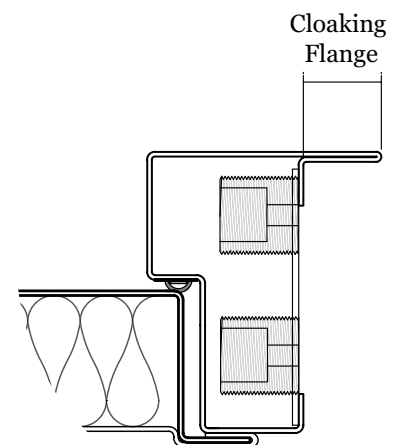
Finishes

- Powder-coating available in any RAL colour
- Marine-grade option

Ask about our range of special powder coatings which include textured finishes, metallic and our popular woodgrain effects for the ultimate designer doorset.



Outward Opening



Inward Opening

Structural opening sizes (mm)*

	Max width	Max height
Single leaf	1470	3800
Double leaf	2860	3800

* Based on a 33mm wide frame. For oversized doors, please enquire.